

- REFERENCE NOTES**
- PAVEMENT DIMENSIONS ARE TO BACK OF CURB
 - PROPERTY LINES OBTAINED FROM THE CITY OF WINNIPEG L.B.I.S., AND SCALE FACTOR WAS NOT APPLIED
 - CATCHBASIN CONNECTIONS TO SEWER DESIGNED TO MAINTAIN PRE-CONSTRUCTION CAPACITY BY CATCH BASIN LEAD RESTRICTION AS INDICATED ON THE DRAWINGS. ADDITIONAL OR MODIFIED CONNECTIONS TO THE SEWER SYSTEM BEYOND THOSE INDICATED ON THE DRAWINGS REQUIRE REVIEW AND WRITTEN APPROVAL BY THE CONTRACT ADMINISTRATOR.

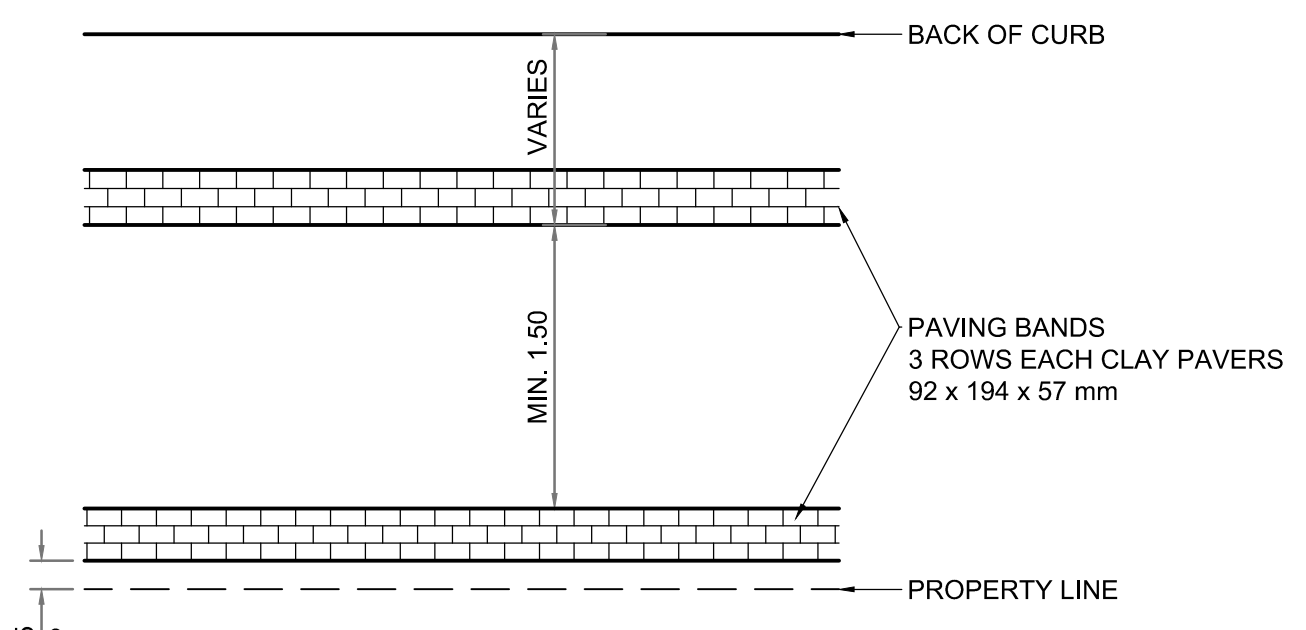
- CONSTRUCTION NOTES**
- REMOVE EXISTING PAVEMENT AND CONSTRUCT NEW 200mm REINFORCED CONCRETE PAVEMENT
 - RENEW EXISTING 100mm CONCRETE SIDEWALK c/w PAVING STONE BAND (SEE DETAIL 4, CT-03)
 - CONSTRUCT NEW 100mm CONCRETE SIDEWALK c/w PAVING STONE BAND (SEE DETAIL 4, CT-03)
 - REMOVE EXISTING CURB
 - CONSTRUCT NEW MONOLITHIC/DOWELLED CONCRETE BARRIER CURB (150mm HT.)
 - CONSTRUCT NEW MONOLITHIC/DOWELLED CONCRETE MODIFIED BARRIER CURB (175mm HT.)
 - CONSTRUCT NEW CURB RAMP (10mm HT. INTEGRAL/MONOLITHIC)
 - REMOVE EXISTING PAVING STONES
 - ADJUST HYDRO MANHOLE FRAME TO GRADE
 - INSTALL DETECTABLE SURFACE WARNING TILE
 - INSTALL 150mm SUB-DRAINS AND CONNECT TO EXISTING CATCH BASIN
 - INSTALL NEW TREE VAULT AS PER DETAIL 2. MAINTAIN 0.3m SEPARATION BETWEEN BOTTOM OF TREE VAULT AND TOP OF ANY UNDERGROUND DUCTS OR INSTALL VOID FORM BARRIER AS REQUIRED
 - INSTALL ENDICOT PAVING STONE BAND

PLANT LIST

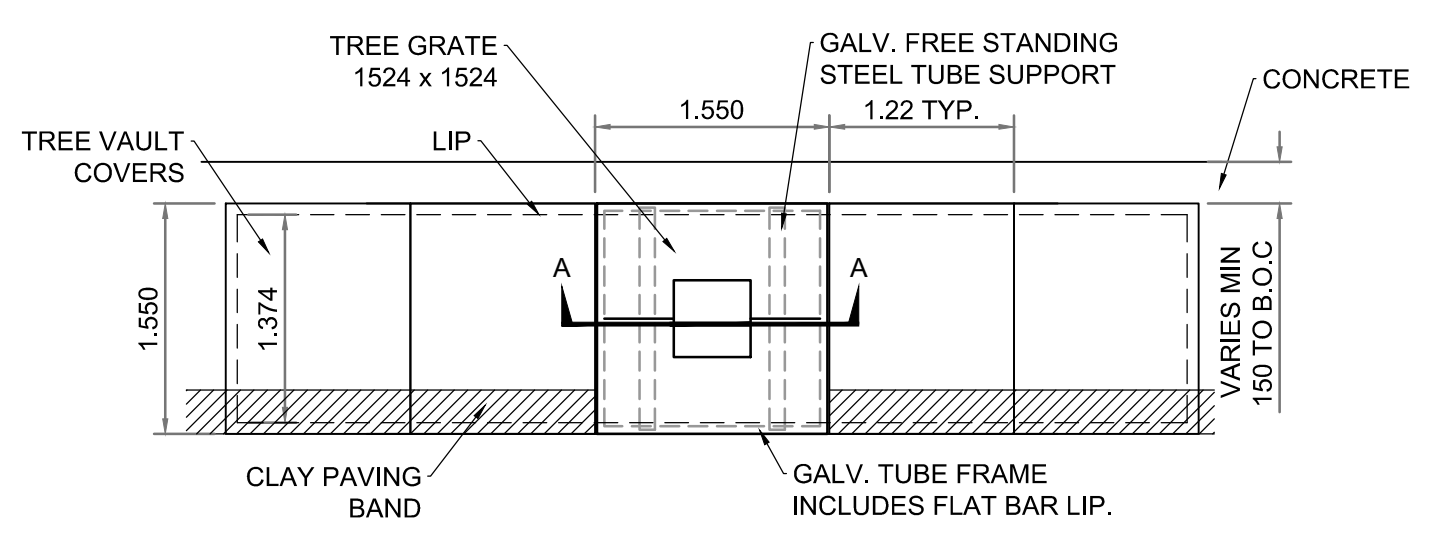
No.	COMMON NAME	BOTANICAL NAME	SIZE / HT	NOTES
DECIDUOUS TREES - LARGE				
2	Ivory Silk Japanese Tree Lilac	<i>Syringa reticulata</i> 'Ivory Silk'	55mm cal.	B&B/Machine
2	American Elm	<i>Ulmus americana</i>	65mm cal.	B&B/Machine

SPECIFICATION: All plant material to be supplied and installed in accordance with the latest edition of Landscape Canada's Metric Guide Specifications for Nursery Stock

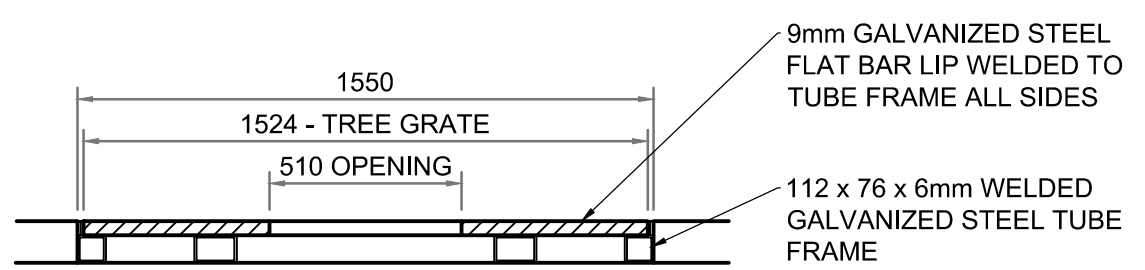
PLAN
Scale 1:250



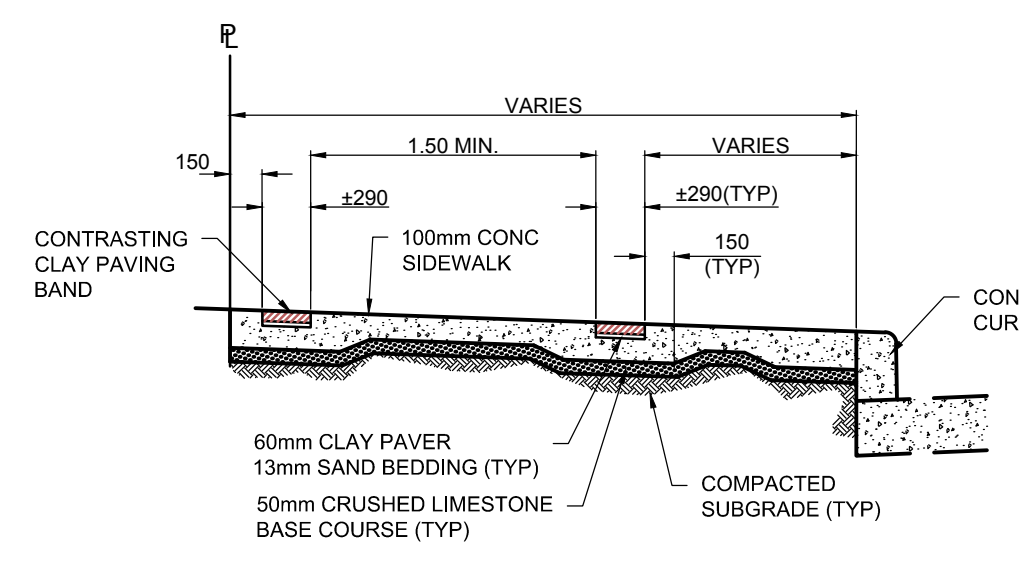
1 | TYPICAL PAVING BAND PATTERN
NTS



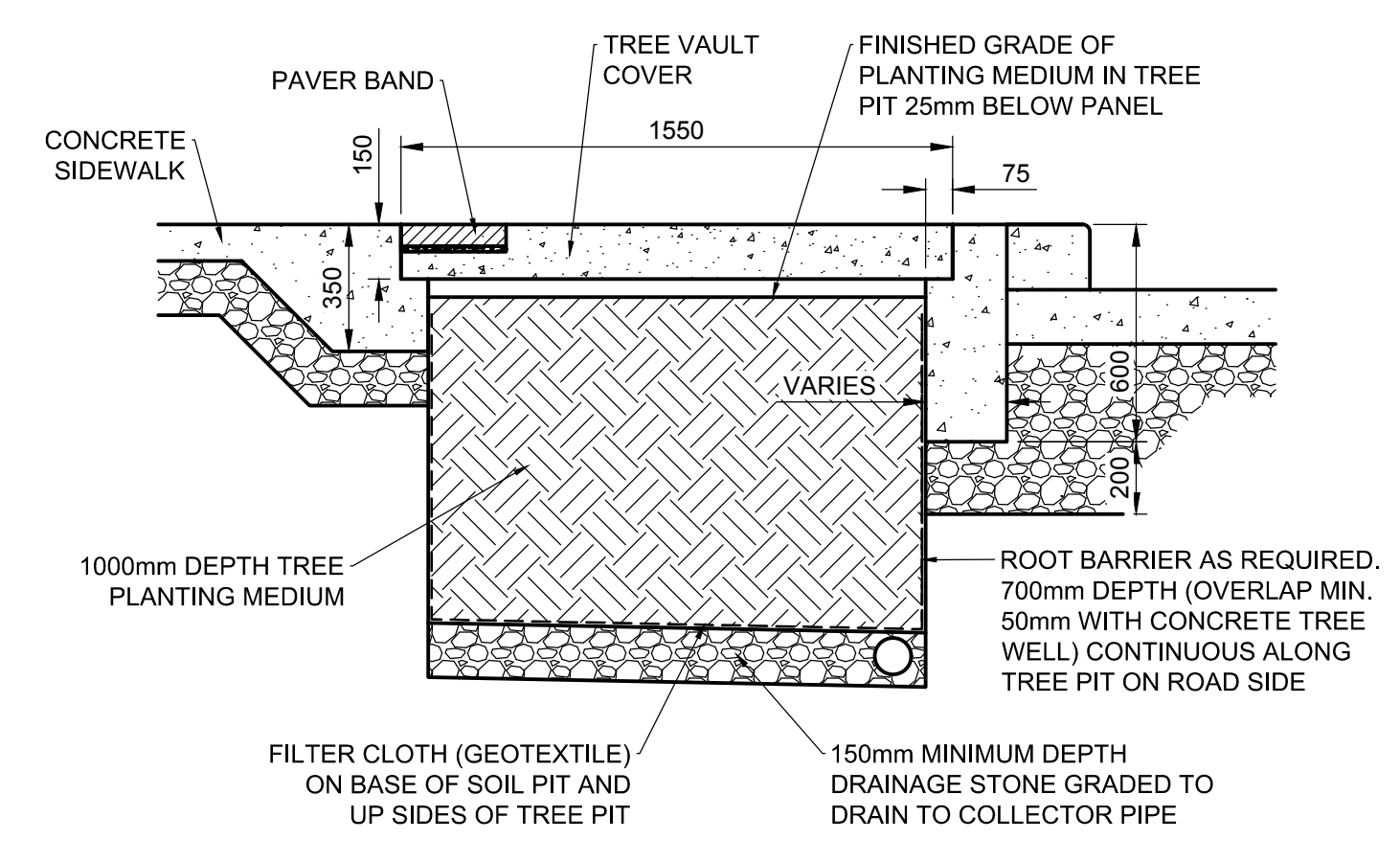
2 | 1.22 x 1.55m TREE VAULT PLAN
NTS



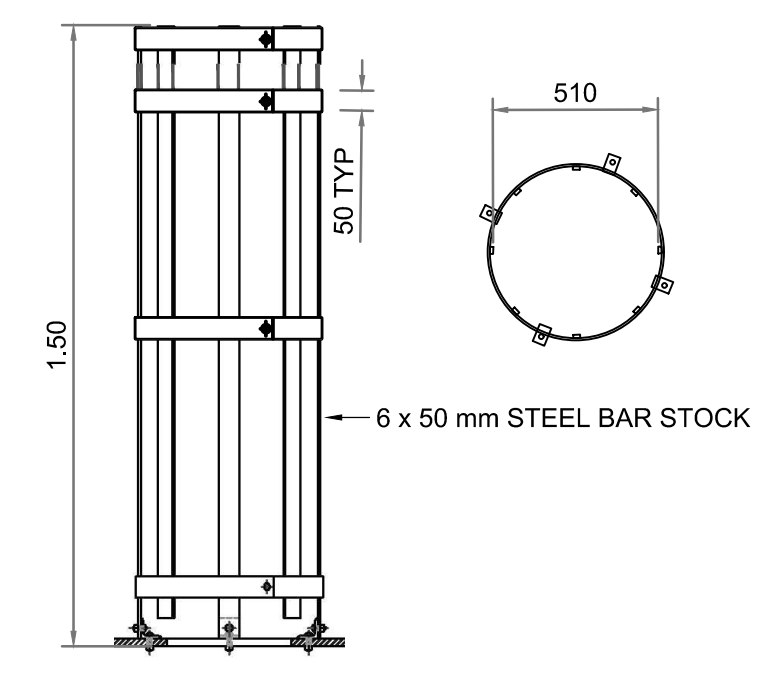
A | TREE GRATE WITH GALVANIZED FRAME
NTS



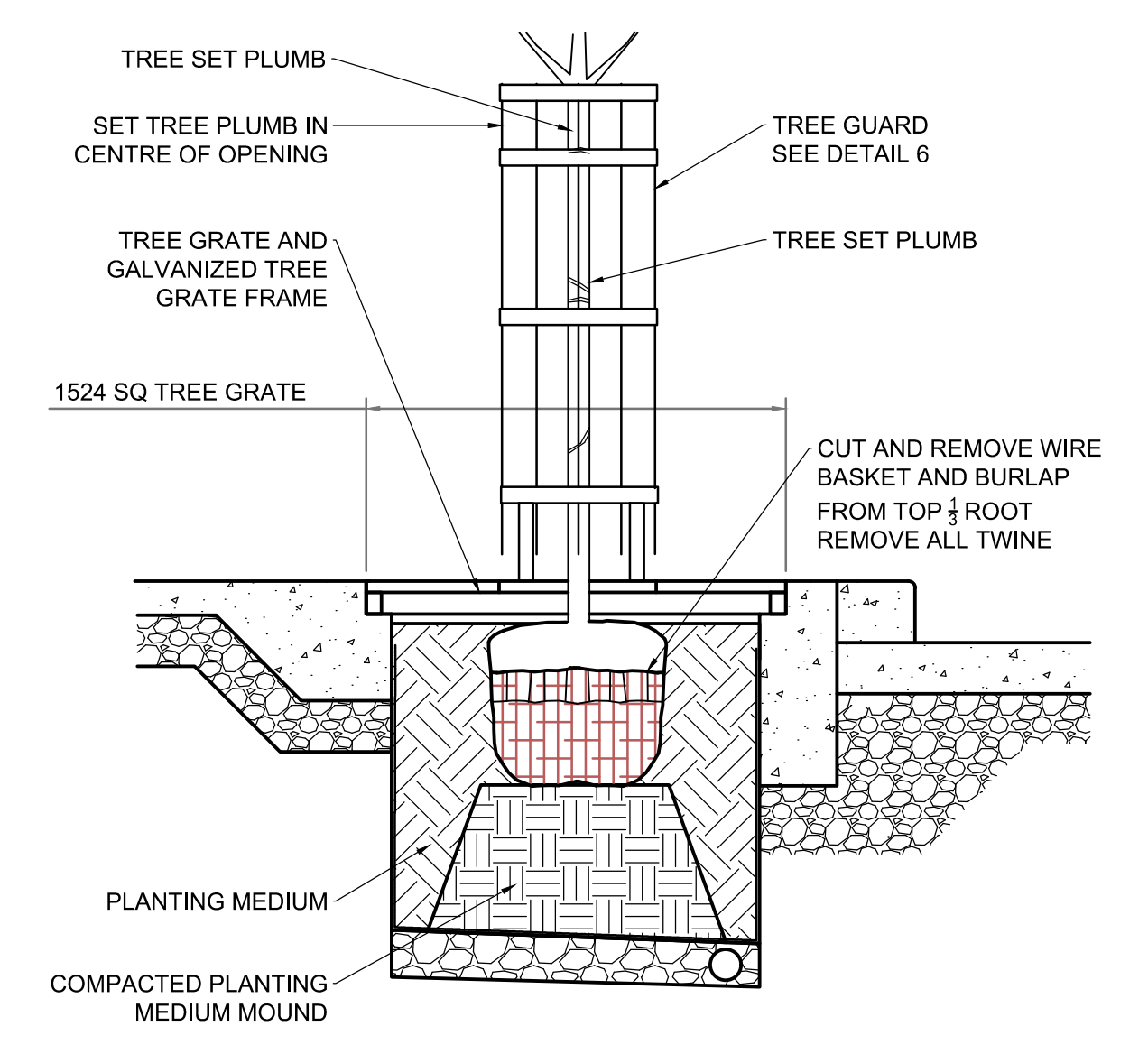
4 | TYPICAL SECTION
NTS



5 | TREE VAULT
NTS



6 | TREE GUARD
NTS



7 | TREE VAULT TREE PLANTING DETAIL
NTS

APEGM
Certificate of Authorization
AECOM Canada Ltd.
No. 4671 Date: _____

METRIC
WHOLE NUMBERS INDICATE MILLIMETRES
DECIMALIZED NUMBERS INDICATE METRES

EXISTING	LEGEND - PLAN	PROPOSED	EXISTING	LEGEND - PLAN	PROPOSED	EXISTING	LEGEND - PROFILE	PROPOSED
150mm W.M.	WATERMAIN	150mm W.M.	HYDRO	M.T.S.	CONCRETE	ASPHALT	PROPERTY LINE	SURVEY BAR
300mm L.D.S.	LAND DRAINAGE SEWER	300mm L.D.S.	250mm W.W.S.	WASTEWATER SEWER	250mm W.W.S.	MANHOLE	CATCH BASIN	CATCH PIT
250mm W.W.S.	TRAFFIC SIGNAL POLE	STREET LIGHT	GAS					

LOCATION APPROVED UNDERGROUND STRUCTURES

SUPV. U/G STRUCTURES COMMITTEE DATE

NOTE: LOCATION OF UNDERGROUND STRUCTURES AS SHOWN ARE BASED ON THE BEST INFORMATION AVAILABLE. BUT NO GUARANTEE IS GIVEN THAT ALL EXISTING UTILITIES ARE SHOWN OR THAT THE GIVEN LOCATIONS ARE EXACT. CONFIRMATION OF EXISTENCE AND EXACT LOCATION OF ALL SERVICES MUST BE OBTAINED FROM THE INDIVIDUAL UTILITIES BEFORE PROCEEDING WITH CONSTRUCTION.

NO.	REVISIONS	DATE	BY
A	TREE VAULT REVISIONS	2019/08/13	TLF
0	ISSUED FOR TENDER	2019/07/26	TLF

AECOM

DESIGNED BY: TLF
CHECKED BY: TLF
DRAWN BY: RAM
APPROVED BY: TLF
HOR. SCALE: 1:250
VERTICAL: 1:10
RELEASED FOR CONSTRUCTION BY: TLF
DATE: 08/08/18

ENGINEER'S SEAL
PROVINCE OF MANITOBA
T.L. FINDLAY
Member 23820
REGISTERED PROFESSIONAL ENGINEER

THE CITY OF WINNIPEG
PUBLIC WORKS DEPARTMENT
ENGINEERING DIVISION

2018 PARKING STREET ENHANCEMENTS PROGRAM
WINNIPEG EXCHANGE DISTRICT

PAVEMENT GRADING PLAN
RUPERT AVENUE - KING STREET TO MAIN STREET

CITY DRAWING NUMBER
SHEET 03 OF 05